

Adaptec® File Saver Client Backup Kit



Full-featured transparent client backup solution provides a critical safety net for vital information

Backing up server data is a common practice in all IT departments. But studies have shown that up to 60 percent of all business data is distributed, residing on computers and laptops throughout an organization. Losing this unprotected data can mean everything from a few hours of worker frustration and lost productivity to the shutdown of an entire business. Without simple, automated methods for backing up distributed data, IT administrators have had to rely on users to manually back up their own files.

Adaptec File Saver provides a critical safety net for vital information by automating the backup of files stored on local drives, and gives computer users a simple way to restore lost files. This cost-effective backup solution combines high levels of data protection and capacity scalability. Designed for remote offices, workgroups, mobile laptop users, and environments with limited IT resources, this plug-and-play solution is easy to use and simple to manage.

Adaptec File Saver client software automatically backs up files to a 1U appliance. Equipped with world-class Adaptec RAID technology, Adaptec File Saver includes four hot-swappable, 250 gigabyte drives for one terabyte of raw capacity. Up to four Adaptec File Saver backup appliances can be configured as a single, four-terabyte volume. Optional Adaptec RAIN (Redundant Array of Independent Nodes) technology allows for additional fault tolerance.

Simplified Setup and Management

Adaptec File Saver wizards and intuitive web-based navigation tools make setup simple. Features like automatic appliance discovery, Dynamic Capacity Expansion with automatic data balancing between appliances, and automatic user account and share creation simplify management. Adaptec has taken all of the complexity out of managing your growing backup capacity by making a single node configuration as easy to install as a printer and multi node configurations require no additional management.

Scalability, Fault Tolerance and Adaptec Patented RAIN Technology

Adaptec File Saver delivers advanced data protection (factory-configured hardware RAID 5) for high levels of data availability. The four disk drives are hot-swappable to maximize system uptime. Dynamic Capacity Expansion, with automatic RAID and load balancing, also maximizes uptime by allowing up to four Adaptec File Saver appliances to be configured as a single array without ever having to take the storage offline. For additional fault tolerance, optional Adaptec patented RAIN technology offers automatic client re-mapping and allows appliances in multi-node configurations to be hot-swapped.

Product Highlights

Automatic and continuous backup protection for desktop and laptop PCs

Users can recover lost files without relying on IT administration using simple file recover wizards

Installs in minutes. No recurring maintenance needed.

1TB raw capacity. Factory configured hardware RAID 5 backup appliance

Advanced backup settings

Email alerts

Browser-based management

Base license includes 25 users. Additional user licenses available

Scalable up to 4 appliances with seamless Dynamic Capacity Expansion

Optional RAIN available for multiple node configurations



Adaptec File Saver Client Backup Kit

Adaptec File Saver Software

At the heart of the Adaptec File Saver solution is client backup software and array management software. The back-up software runs transparently in the background, giving PC and laptop users peace of mind that their vital data is protected. And, with many advanced options configured and enabled by default, software makes Adaptec File Saver easy to use.

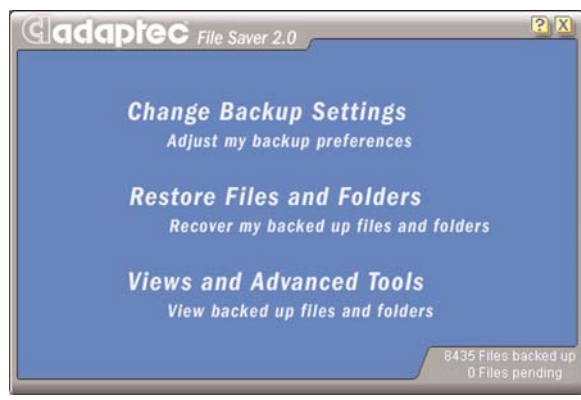
Client backup software. Adaptec File Saver client backup software is simple to

install and manage, and it ensures continuous file backup of users' files. With default settings, backup begins automatically after the software is installed on a PC or laptop. And, after initial backup, only new or changed files are backed up to the Adaptec Files Saver appliance. When not connected to the network, the software continues to track changes to files and folders, and it then backs up these changes automatically when users reconnect to the network.

Adaptec File Saver client backup software also allows users to customize their file backup options, including changing the files and folders that are backed up by default, adjusting the delay time before backup, and specifying the number of versions of a single file that is backed up. Additionally, to better manage system performance, users can select the file compression rate (backup speed) and can adjust background processing priority.

Recovery of lost data is a simple process, and users can select specific files and folders to be restored. Using a familiar tree-view display, users can navigate their backed up files and folders safely stored on the Adaptec Files Saver appliance. Users can also view recent activity showing the status of new or recently changed files, and they can compare backed up files to originals. Clicking on the Adaptec File Saver icon on their desktop provides easy access to the software and an icon

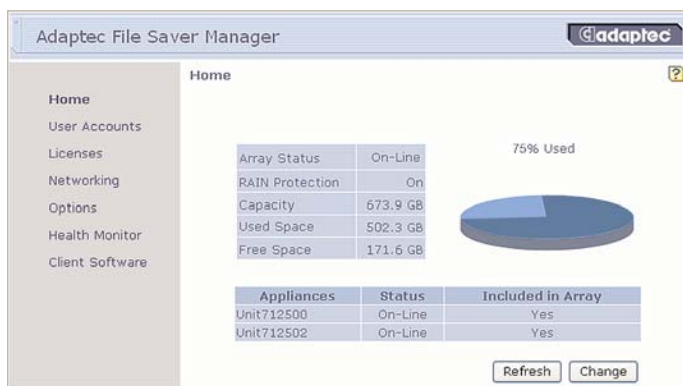
in the system tray displays current activity status – active, backing up, and logging changes.



Client backup software interface

Management software. Operating in tandem with the client software, the array management software, Adaptec File Saver Manager, enables a host of advanced options for IT managers. After automatic appliance discovery a simple set-up via a three-step, wizard-guided process makes the appliance very simple to configure and the management software is browser-based, so it can be accessed from virtually any PC with a network connection.

Adaptec File Saver Manager software makes multi-node configurations as easy to set up and manage as a single appliance. Plus, data load balancing between nodes is automated. Each appliance is factory configured with hardware RAID 5 and for additional fault tolerance, optional Adaptec patented RAIN can be added; RAIN level migration is automatic as the array migrates from mirroring data (RAIN 1) to distributing data (RAIN 5) across multiple nodes. Management software also



Adaptec File Saver Manager home page

features e-mail alerts, an event log, and a simple display for tracking the backup activity of all users. User account and shares are created automatically when client software is download from the appliance.

Adaptec File Saver software's intuitive,

web-based navigation tools give IT administrators an easy way to administer the Adaptec File Saver solution, making client backup management a breeze.

Adaptec Quality and Support

Adaptec File Saver has been extensively tested to deliver unsurpassed reliability, performance, and compatibility. Like all Adaptec products, Adaptec File Saver is backed by our industry-leading technical support, including a three-year warranty, to maximize the performance and life of your solution.

Adaptec File Saver Client Backup Kit

Adaptec File Saver ESA1500 1.0TB (2069300)

Why to Buy	Protect the files distributed throughout an organization on laptops and PC's	Management	Browser-based management, Adaptec File Saver Manager
Customer Needs	Ideal for small businesses, remote offices, workgroups, mobile laptop users and wherever IT resources are limited	Status LEDs	Yes
		SMTP Event Notification	Yes (e-mail, pager)
Client Backup Software Features	<ul style="list-style-type: none"> • Wizard-guided client software installation and management • Backup begins automatically with default settings • Advanced settings provide for customizable, rule-based backup • Simple wizard for restoring lost files • Only new or modified files are saved after initial system backup, to optimize network performance 	Client Operating Systems	Windows® 98, Windows NT®, Windows 2000, Windows XP®
		Minimum Client System Requirements	<ul style="list-style-type: none"> • Recommend 256 MB memory • 6 MB of free disk space on each client system
		System	<ul style="list-style-type: none"> • 512 MB memory PC2100 DDR • Intel Celeron 2.0 GHz processor • Linux operating system
		Mounting Options	1U rack mount (rail kit included) or desktop
Client User Licenses	<ul style="list-style-type: none"> • 25 user licenses included with each appliance. Additional user licenses available. • Up to 100 users per appliance in single appliance or mirrored configuration • Up to 100 additional users with each subsequent appliance 	Dimensions	1.75" H x 17.5" W x 20.125" D (not including front handles), 21.375" (including front handles)
		Weight	24 lbs (appliance weight, not shipping weight)
Capacity*	<ul style="list-style-type: none"> • 1 TB raw per appliance (4 x 250 GB Serial ATA drives), and up to 4 TB raw per array • 720 GB usable hardware RAID 5 protected storage per appliance, and up to 2.88 TB per array 	Hard Disk Drives	<ul style="list-style-type: none"> • Four, 250 GB Serial ATA • Low profile 1-inch • 1.5 Gigabit
		Kit Contents	<ul style="list-style-type: none"> • Adaptec File Saver enclosure • Four 250 GB HDD • Two 7 ft Ethernet cables • Power Cables • Adaptec File Saver Quick Install Guide • Adaptec File Saver Manager CD • 25 user licenses included with each appliance
Scalability	<ul style="list-style-type: none"> • 1 to 4 appliances per array • Automatic data striping in multi-appliance arrays (default) • Dynamic Capacity Expansion with automatic RAID and load balancing • Scalable network bandwidth 	Optional Features Upgrades	<ul style="list-style-type: none"> • RAIN 1, 5 Fault Tolerance with automatic RAIN Level Migration • Additional user licenses available
		Warranty	3-years
Fault Tolerance	<ul style="list-style-type: none"> • Hardware RAID 5 protection in each appliance • Hot swap drives • ECC memory • Optional RAIN 1, 5 protection in multi-appliance arrays • Hot swap nodes (when RAIN-enabled) 		
Network Support	<ul style="list-style-type: none"> • Two Gigabit Ethernet ports (one for network access and one for spanning appliances) • DHCP support 		

* 1 GB = 10⁹ bytes 1 TB = 10¹² bytes

Adaptec **File Saver** Client Backup Kit

**Adaptec, Inc.**

691 South Milpitas Boulevard
Milpitas, California 95035
Tel: (408) 945-8600
Fax: (408) 262-2533

Literature Requests:

US and Canada: 1 (800) 442-7274 or (408) 957-7274
World Wide Web: <http://www.adaptec.com>

Pre-Sales Support: US and Canada: 1 (800) 442-7274 or (408) 957-7274
Pre-Sales Support: Europe: Tel: (32) 2-352-34-11 or Fax: (32) 2-352-34-00

Copyright 2004 Adaptec, Inc. All rights reserved. Adaptec and the Adaptec logo are trademarks of Adaptec, Inc., which may be registered in some jurisdictions. Microsoft, Windows, Windows 98, Windows NT, Windows 2000, and Windows XP are registered trademarks of Microsoft Corporation, used under license. All other trademarks used are owned by their respective owners.

Information supplied by Adaptec, Inc., is believed to be accurate and reliable at the time of printing, but Adaptec, Inc., assumes no responsibility for any errors that may appear in this document. Adaptec, Inc., reserves the right, without notice, to make changes in product design or specifications. Information is subject to change without notice.