

Nortel Networks Alteon Security Manager

Simplifying security management to reduce operations costs

Today, network and IT administrators are faced with protecting corporate infrastructure against an increasingly complex array of attacks targeting their applications and services. Firewalls, secure sockets layer (SSL) infrastructure, and intrusion detection systems (IDS) are some of the major tools used to thwart these attacks. Because each security platform typically comes with its own set of management tools, managing the increasing number of security devices poses a challenge for the IT administrator. As a result, security infrastructure becomes difficult to implement and maintain, resulting in lower productivity, higher operations costs, and potentially compromised security.

Nortel Networks Alteon Security Manager—a new management solution designed to provide a single point of administration for security applications—addresses the security management complexities in today's corporate networks. It provides a single interface for consistent administration across multiple devices or groups of devices (clusters) for simplicity and ease of use. It auto-discovers and displays multi-layer network topologies with corresponding status information. And, it enables proactive management, problem

solving, and capacity planning. As a result, the Alteon Security Manager enables corporate IT administrators to offer more robust security with lower operations costs and reduced training time.

Provides comprehensive security management

The Alteon Security Manager provides comprehensive performance, fault, and configuration management across Nortel Networks Alteon security product portfolio. In the first release, it manages the Alteon Switched Firewall System—unique switch-accelerated firewalls that provide high-performance, bullet-proof security. The Alteon Security Manager will quickly evolve to support management of Alteon SSL Accelerator appliances, Alteon Application Switches, and other security solutions. To enable comprehensive management and ease of use, the Alteon Security Manager integrates into the HP OpenView Network Node Manager (NNM) and will integrate into the Nortel Networks Optivity Network Management System in a future release.



Enterprise network and service management solutions from Nortel Networks are designed to deliver network resiliency and reduce total cost of ownership for enterprise customers. They provide a fast and efficient way to manage and troubleshoot networks built with Nortel Networks enterprise products. Powerful applications provide a comprehensive set of network visualization, discovery, fault, diagnostic, and configuration capabilities that can provide the performance and reliability of converged networks.

Facilitates time-consuming tasks with configuration management tools

Comprehensive configuration management capabilities of the Alteon Security Manager include:

- Provides auto-discovery of network devices and a graphical representation of the network hierarchy (devices and clusters)
- Enables viewing of system information such as image/software versions; security information including management interface options and enabled interfaces; status information, including uptime, errors/alarms, load, and memory/disk usage; and run-time application information including operational status, name of security policies, and the date each policy was installed
- Provides administrators with a tool for globally downloading and activating software/images/patches
- Allows administrators to easily identify physical devices by “beeping” device

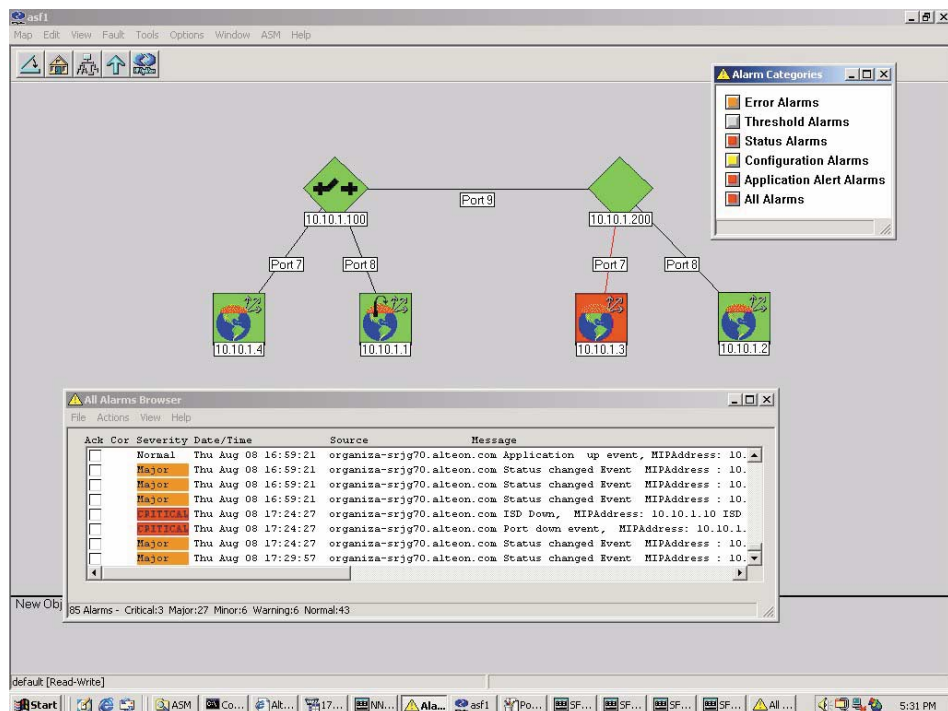


Figure 1. Fault management eases the process of identifying and solving problems.

- Launches device-level configuration applications including the Alteon Switched Firewall command line interface (CLI) and Web user interface
- Launches third-party application management tools, including Check Point SmartCenter and Provider-1

Enables proactive problem discovery and analysis through fault management

The Alteon Security Manager supports health checking of security clusters. It detects and displays faults from multiple devices/clusters in an Alarm Browser. Events are categorized according to severity and propagated in different condition-specific colors, making it easy for network and IT administrators to identify and solve problems before they escalate and cause network disruption.

Provides detailed network knowledge with performance management tools

The Alteon Security Manager enables monitoring of activity and utilization data for determining security device/cluster performance. It enables collection and visualization of the following performance information:

- Device statistics including memory utilization and CPU utilization
- Port throughput statistics including packet rate (unicast, multicast, and broadcast packets), byte rate, discard rate, and error rate.

The Alteon Security Manager enables network and IT administrators to obtain detailed knowledge of their networks for capacity planning purposes.

Enables secure management of security infrastructure

The Alteon Security Manager eases the creation and modification of user accounts. It employs user access and password information to allow access to the appropriate devices/clusters in the network. The Alteon Security Manager supports SSL, SSH, and SNMPv3 to provide secure communication between the management station and the security devices.

Alteon Security Manager benefits

- Lower operations and training costs through simplified management of security infrastructure and automation of time-consuming tasks
- Scalable administration grows to meet network and business requirements
- Integration and compatibility with third-party management tools enables comprehensive management for network and IT administrators
- Proactive fault and performance management tools help solve problems before they impact the network

System requirements

Hardware requirements

Management workstation with the following minimum configuration:

- Intel Pentium Processor, 333 MHz or greater
- 256 MB RAM
- Free disk space: 400 MB + 250 MB free paging space (for HP OpenView and the Alteon Security Manager)

Software requirements

- Windows 2000 Server
- HP OpenView NNM 6.2 for Windows and NNM Consolidated Patch NNM_00932
- Optional package for SNMPv3 support: SNMP Research's SNMP Security Pack

Prerequisites (Management Station)

- HP OpenView NNM
- Check Point management applications should be installed. Support exists for FP2, FP3, and Provider-1
- Alteon Security Manager license

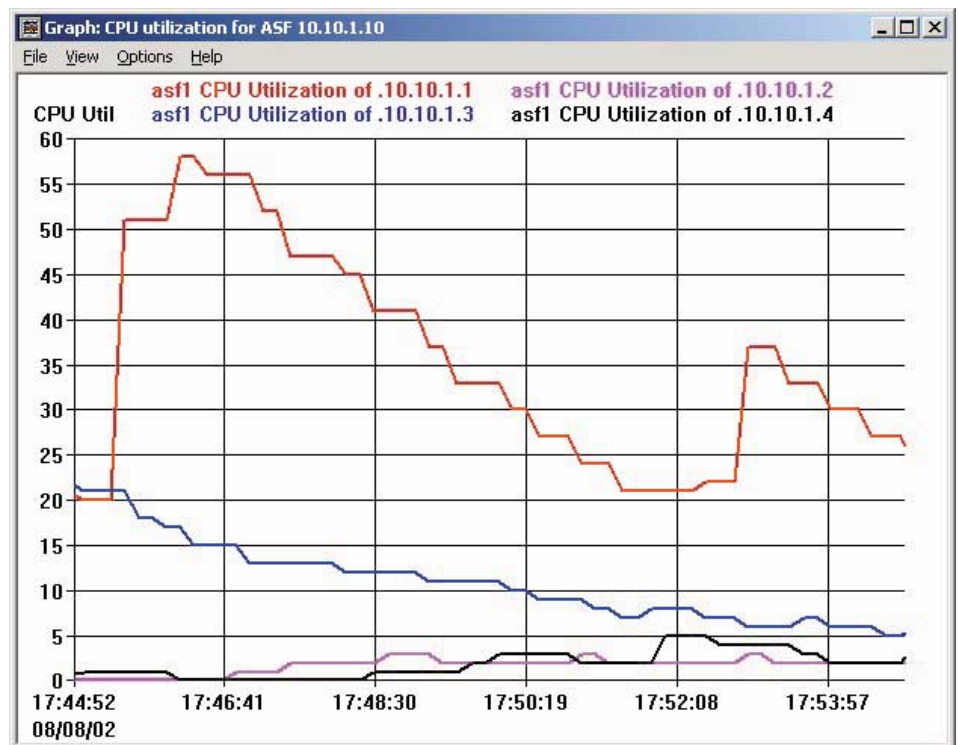


Figure 2. Performance management enables administrators to capture and analyze security performance data.

In the United States:

Nortel Networks
35 Davis Drive
Research Triangle Park, NC 27709
USA

In Canada:

Nortel Networks
8200 Dixie Road,
Suite 100
Brampton, Ontario L6T 5P6
Canada

In Caribbean and Latin America:

Nortel Networks
1500 Concorde Terrace
Sunrise, FL 33323
USA

In Europe:

Nortel Networks
Maidenhead Office Park
Westacott Way
Maidenhead Berkshire SL6 3QH
UK

In Asia:

Nortel Networks Asia
6/F Cityplaza 4
Taikoo Shing
12 Taikoo Wan Road
Hong Kong



Nortel Networks is an industry leader and innovator focused on transforming how the world communicates and exchanges information. The Company is supplying its service provider and enterprise customers with communications technology and infrastructure to enable value-added IP data, voice and multimedia services spanning Wireless Networks, Wireline Networks, Enterprise Networks, and Optical Networks. As a global Company, Nortel Networks does business in more than 150 countries. More information about Nortel Networks can be found on the Web at:

www.nortelnetworks.com

For more information, contact your Nortel Networks representative, or call 1-800-4 NORTEL or 1-800-466-7835 from anywhere in North America.

*Nortel Networks, the Nortel Networks logo, the globemark design, and Alteon are trademarks of Nortel Networks. All other trademarks are the property of their owners

Copyright © 2003 Nortel Networks. All rights reserved. Information in this document is subject to change without notice. Nortel Networks assumes no responsibility for any errors that may appear in this document.

NN103060-011303