



What do you want in a router?

Cisco integrated service routers / more inside

For teleworkers, small offices, small to medium-sized businesses, and small to large enterprise branch offices.

20 years after introducing the world's first router, Cisco Systems unveils the first portfolio engineered for the secure, wire-speed delivery of concurrent data, voice, video, and wireless services.



Expanded Features and Scalability

Feature	850	870	1800 (fixed)	1841 (modular)	2801	2811	2821	2851	3825	3845
Form Factor	Desktop	Desktop	Desktop	Desktop	1 RU	1 RU	2 RU	2 RU	2 RU	3 RU
Integrated Routed/WAN Ethernet	1 10/100 WAN (851)	1 10/100 WAN (871)	1 10/100 (1801-1803), 2 10/100 (1811, 1812)	2 10/100	2 10/100	2 10/100	2 10/100/1000	2 10/100/1000	2 10/100/1000	2 10/100/1000
10/100 Ethernet Switch Ports	4	4	8	Up to 4	Up to 16	Up to 32	Up to 40	Up to 64	Up to 88	up to 112
WAN Support	ADSL Annex A (857)	ADSL Annex B (876), ADSL Annex A (877), G.SHDSL (878)	ADSL Annex A (1801), ADSL Annex B (1802), G.SHDSL (1803)	ADSL and G.SHDSL WICs (optional)	ADSL and G.SHDSL WICs (optional)	ADSL and G.SHDSL WICs (optional)	ADSL and G.SHDSL WICs (optional)	ADSL and G.SHDSL WICs (optional)	ADSL and G.SHDSL WICs (optional)	ADSL and G.SHDSL WICs (optional)
ISDN Ports	—	1 BRI (876), 1 BRI (878 Out of Band Management Only)	1 BRI (1801, 1802, 1803, 1812)	BRI WIC (optional)	BRI WIC (optional)	BRI or PRI (optional)	BRI or PRI (optional)	BRI or PRI (optional)	BRI or PRI (optional)	BRI or PRI (optional)
Analog Modem Ports	—	—	1 (1811)	WIC (optional)	WIC (optional)	WIC or Network Module (optional)	WIC or Network Module (optional)	WIC or Network Module (optional)	WIC or Network Module (optional)	WIC or Network Module (optional)
Interface Card Slots	—	—	—	2 HWIC/WIC/VVIC (data only)	2 HWIC/WIC/VVIC, 1 VVIC/VVIC	4 HWIC/WIC/VVIC	4 HWIC/WIC/VVIC	4 HWIC/WIC/VVIC	4 HWIC/WIC/VVIC	4 HWIC/WIC/VVIC
Network Module Slots	—	—	—	—	—	1	1	1	2	4
AIM Slots	—	—	—	1	2	2	2	2	2	2
USB Ports	—	2 (v2.0) (871 only)	2 (v2.0) (1811 and 1812 only)	1 (v1.1)	1 (v1.1)	2 (v1.1)	2 (v1.1)	2 (v1.1)	2 (v1.1)	2 (v1.1)
PoE Support	Yes, Optional External Adapter	Yes, Optional External Adapter	Optional	Optional	Optional	Optional	Optional	Optional	Optional	Optional
Embedded Crypto Processor	Yes	Yes	Yes	Yes	Yes	Yes	Yes	Yes	Yes	Yes
Default/Max Flash	20 MB	24/52 MB	32/128 MB	32/128 MB	32/128 MB	64/256 MB	64/256 MB	64/256 MB	64/256 MB	64/256 MB
Default/Max SDRAM	64 MB	128/256 MB	128/384 MB	128/384 MB	128/384 MB	256/760 MB	256/1024 MB	256/1024 MB	256/1024 MB	256/1024 MB
Gigabit Ethernet, SFP Port	—	—	—	—	—	Optional (HWIC)	Optional (HWIC)	Optional (HWIC)	1	1
Cisco Router and Security Device Manager (SDM)	Yes	Yes	Yes	Yes	Yes	Yes	Yes	Yes	Yes	Yes

Advanced Security

VPN	Yes	Yes	Yes	Yes, requires Cisco IOS Security Image	Yes, requires Cisco IOS Security Image	Yes, requires Cisco IOS Security Image	Yes, requires Cisco IOS Security Image	Yes, requires Cisco IOS Security Image	Yes, requires Cisco IOS Security Image	Yes, requires Cisco IOS Security Image
Maximum VPN Tunnels	Up to 10	Up to 20	Up to 50	Up to 800	Up to 1500	Up to 1500	Up to 1500	Up to 1500	Up to 2000	Up to 2500
Network Admission Control (NAC)	—	Yes	Yes	Yes, requires Cisco IOS Security Image	Yes, requires Cisco IOS Security Image	Yes, requires Cisco IOS Security Image	Yes, requires Cisco IOS Security Image	Yes, requires Cisco IOS Security Image	Yes, requires Cisco IOS Security Image	Yes, requires Cisco IOS Security Image
URL Filtering	—	Yes	Yes	Yes, IOS-based	Yes, IOS-based	Yes, IOS- and NM-CE-based	Yes, IOS- and NM-CE-based	Yes, IOS- and NM-CE-based	Yes, IOS- and NM-CE-based	Yes, IOS- and NM-CE-based
Stateful Firewall	Yes	Yes	Yes	Yes	Yes	Yes	Yes	Yes	Yes	Yes
Inline Intrusion Prevention System (IPS)	—	Yes	Yes	Yes, requires Cisco IOS Security Image	Yes, requires Cisco IOS Security Image	Yes, requires Cisco IOS Security Image	Yes, requires Cisco IOS Security Image	Yes, requires Cisco IOS Security Image	Yes, requires Cisco IOS Security Image	Yes, requires Cisco IOS Security Image

Voice Support

DSP (PVDM) Slots on Motherboard	—	—	—	—	2	2	3	3	4	4
Survivable Remote Site Telephony (SRST)	—	—	—	—	Yes, up to 24 users	Yes, up to 36 users	Yes, up to 48 users	Yes, up to 96 users	Yes, up to 336 users	Yes, up to 720 users
Cisco CallManager Express (CME)	—	—	—	—	Yes, up to 24 users	Yes, up to 36 users	Yes, up to 48 users	Yes, up to 96 users	Yes, up to 168 users	Yes, up to 240 users
Cisco Unity™ Express	—	—	—	—	Yes, up to 50 mailboxes	Yes, up to 120 mailboxes	Yes, up to 120 mailboxes	Yes, up to 120 mailboxes	Yes, up to 120 mailboxes	Yes, up to 120 mailboxes
Digital Voice	—	—	—	—	Yes, up to 30 calls	Yes, up to 80 calls	Yes, up to 128 calls	Yes, up to 192 calls	Yes, up to 480 calls	Yes, up to 480 calls
Analog Voice	—	—	—	—	Yes, up to 16 FXS, 16 FXO ports	Yes, up to 28 FXS, 24 FXO ports	Yes, up to 52 FXS, 36 FXO ports	Yes, up to 52 FXS, 36 FXO ports	Yes, up to 52 FXS, 36 FXO ports	Yes, up to 52 FXS, 36 FXO ports
Local Conferencing and Transcoding	—	—	—	—	Yes, use PVDMs	Yes, use PVDMs	Yes, use PVDMs	Yes, use PVDMs	Yes, use PVDMs	Yes, use PVDMs

Wireless

Integrated 802.11 b/g Access Point (2.4 GHz; 54 Mb/s)	Yes 850W	Yes 870W	Yes 1800W	HWIC (Optional)	HWIC (Optional)	HWIC (Optional)	HWIC (Optional)	HWIC (Optional)	HWIC (Optional)	HWIC (Optional)
Integrated 802.11 a/b/g Access Point (simultaneous 2.4 and 5GHz; 2x54 Mb/s)	—	—	Yes 1800W	HWIC (Optional)	HWIC (Optional)	HWIC (Optional)	HWIC (Optional)	HWIC (Optional)	HWIC (Optional)	HWIC (Optional)
RP-TNC connectors for field-replaceable optional high-gain antennas	—	Yes	Yes	Yes	Yes	Yes	Yes	Yes	Yes	Yes
Diversity (dual) antennas	—	Yes	Yes	Yes	Yes	Yes	Yes	Yes	Yes	Yes

Cisco 3800 Series

Medium to Large-Sized Businesses and Enterprise Branch Offices



Cisco 2800 Series

Small to Medium-sized Businesses and Enterprise Branch Offices



Cisco 1800 Series

Small to Medium-sized Businesses and Small Enterprise Branch Offices

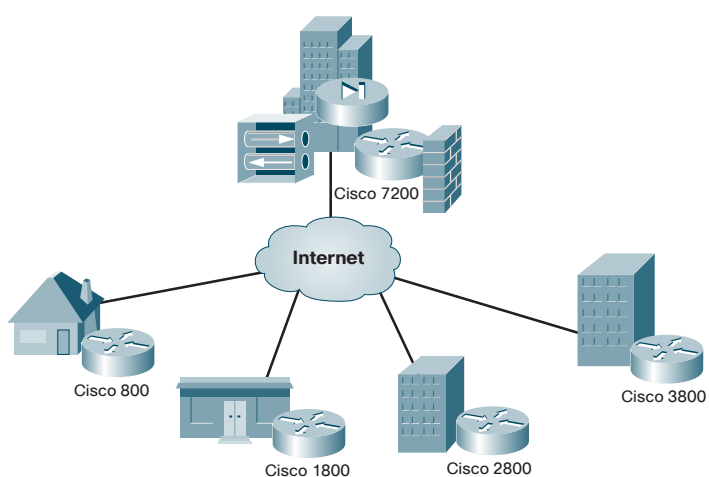


Cisco 800 Series

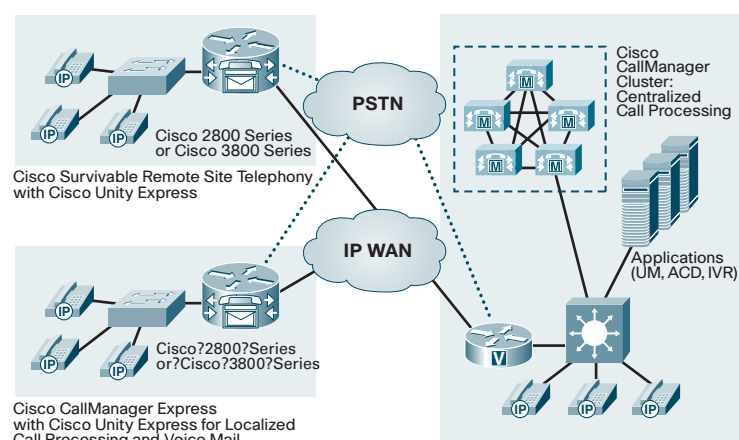
Small Offices and Teleworker Deployments



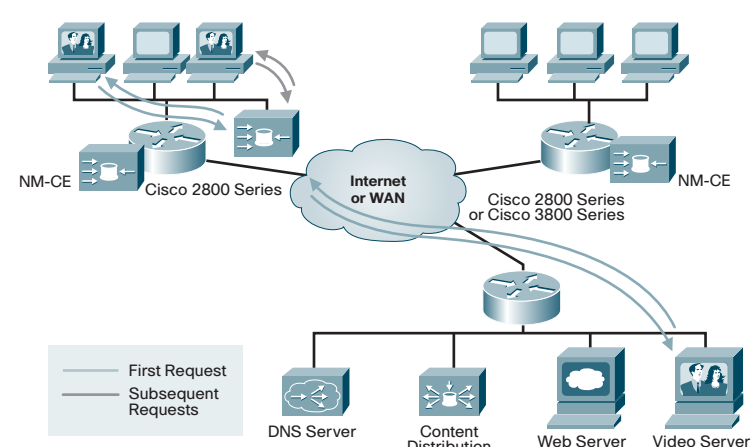
Security



IP Communications



Application Acceleration - Video



Wireless Application

