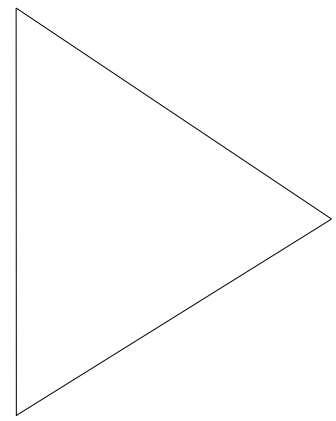


Data Sheet

November 1995



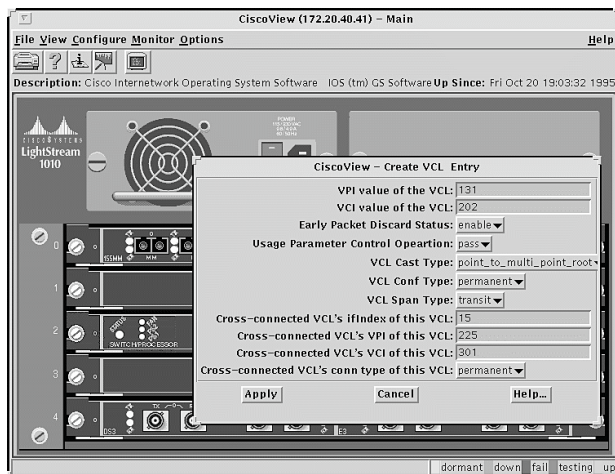
Cisco View for the LightStream 1010

Comprehensive ATM Switch Configuration Management

The CiscoView™ application for Cisco's LightStream® 1010 ATM switch is a graphical user interface (GUI)-based device management application that provides dynamic status, statistics, and configuration information for the LightStream 1010. This application is a subset of the CiscoView application that offers similar features for other switched internetworking products such as Catalyst™ LAN switches and Cisco routers.

The CiscoView application is also included within CiscoWorks™, Cisco's enterprise network management application suite. It displays a physical view of any Cisco device and shows real-time LED and interface status. The CiscoView application provides comprehensive monitoring functions and simplifies basic troubleshooting tasks.

Figure 1. CiscoView for the LightStream 1010



Using the CiscoView application for the LightStream 1010, users can more easily understand the complex management data and configuration parameters available for ATM switches. It organizes this information into graphical representations presented in a clear, consistent format.

Flexibility and Integration

The CiscoView application for the LightStream 1010 can be integrated with several of the leading network management platforms, providing management application integration. It can also be run on UNIX workstations as a fully functional, independent LightStream 1010 management application. In addition, it can be launched from the AtmDirector™ topology map by simply double-clicking on a LightStream 1010 icon.

Features

- Graphically displays a physical view of any LightStream 1010 from a centralized location without visiting each device at remote sites
- Graphical interface shows a continuously updated view of the LightStream 1010's switch fabric, power supplies, fans, and LED status
- Provides easy access to ATM statistics as well as operational and alarm information
- Allows the administrator to perform important ATM configuration tasks, including the creation of permanent virtual connections (PVCs)

- Can be invoked several times to simultaneously view and manage multiple LightStream 1010s
- Can be integrated with the following network management platforms to provide a seamless and powerful system to manage Cisco devices:
 - Sun Microsystems SunNet Manager
 - Hewlett-Packard OpenView

Specifications

Compatible OS Platforms

- Sun SPARCstation running SunOS 4.1.3 or Solaris 2.4
- HP/Apollo Series 700 running HP-UX 9.03, 9.04, 9.05

Network Management Platform Compatibility

- SunNet Manager
- Hewlett-Packard OpenView

Environments Supported

Platform	Operating System	NMS Platform	Version of X Windows
Sun (UNIX)	Solaris 2.4	SunNet Manager 2.2.1, 2.2.2, HP OpenView 3.3	OpenWindows 3.x, X11R5
	Sun OS 4.1.3	SunNet Manager 2.2.1, 2.2.2, HP OpenView 3.3	OpenWindows 3.x, X11R5
HP (UNIX)	HP-UX 9.03, 9.04, 9.05	HP OpenView 3.3	HP-VUE, X11R5

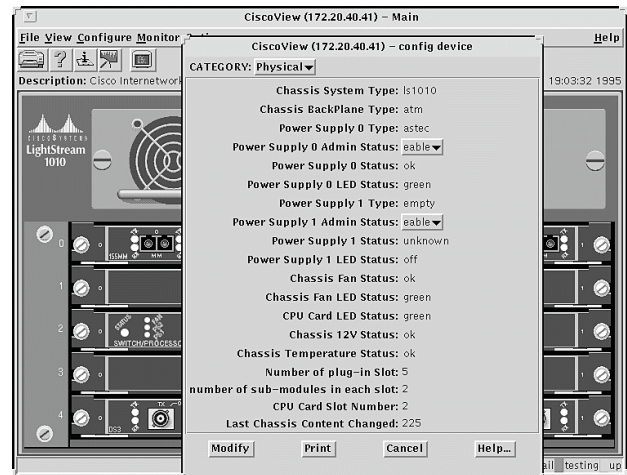
Hardware Requirements

- Color monitor required
- At least 32 megabytes of main memory recommended

Network Management Protocol

- SNMP V1 and V2 (RFC 1157, RFC 1441-1444, 1448-1451).

Figure 2. The CiscoView application for the LightStream 1010 provides network managers with information on status and configuration



Access to SNMP Agent in LightStream 1010

- In-band ATM via Ethernet LAN Emulation client
- In-band ATM via RFC 1577 Classical IP over ATM client
- Out-of-band via Ethernet
- Out-of-band via serial interface