



DXi3500/DXi5500

Disk backup and replication appliances

The DXi-Series disk backup and replication appliances use Quantum's data de-duplication technology to expand the amount of backup data users can retain on fast-recovery RAID systems by 10 to 50 times. The result is a cost-effective way for IT departments to store backup data on disk for months instead of days, providing high speed, reliable restores, increasing available data recovery points, and reducing media management. For disaster recovery in distributed environments, the DXi-Series appliances make automated, WAN replication practical by dramatically reducing the bandwidth required to move backup data securely between sites. DXi-Series solutions are integrated appliances that are easy to install and use with all leading backup applications. They provide best-in-class performance and flexible, easy-to-use interface options including NAS, virtual tape library or mixed presentations along with Fibre Channel and iSCSI connectivity. DXi-Series appliances are part of a comprehensive set of backup solutions, serviced and supported by Quantum, the leading global specialist in backup, recovery, and archive.



DXi-Series appliances enable WAN-based replication of backup data for DR protection

UP TO 540TB BACKUP RETENTION DISK CAPACITY UTILIZING PATENTED DE-DUPLICATION TECHNOLOGY

UP TO 800GB/HOUR BACKUP PERFORMANCE

FIBRE CHANNEL AND GIGABIT ETHERNET CONNECTIVITY; NAS AND VTL INTERFACES

MULTI-SITE REPLICATION OPTIONS

FEATURES AND BENEFITS

- ❏ Patented data de-duplication technology increases the backup data users can retain on disk by 10 to 50 times—for fast, reliable restores and longer retention windows
- ❏ Provides months of data retention for primary data stores from 250GB to more than 10TB
- ❏ Automated replication dramatically reduces the bandwidth to replicate backup data between sites—for automated disaster recovery protection
- ❏ NAS and virtual library interface with GbE or Fibre Channel connectivity provides an optimal combination of flexibility, ease of use and performance
- ❏ High backup performance of up to 800GB per hour provides enterprise scale protection, even for tight backup windows
- ❏ Part of a comprehensive backup solution set, supported by Quantum, the leading specialist in backup, recovery, and archive and its StorageCare™ Guardian remote alerting and diagnostic system

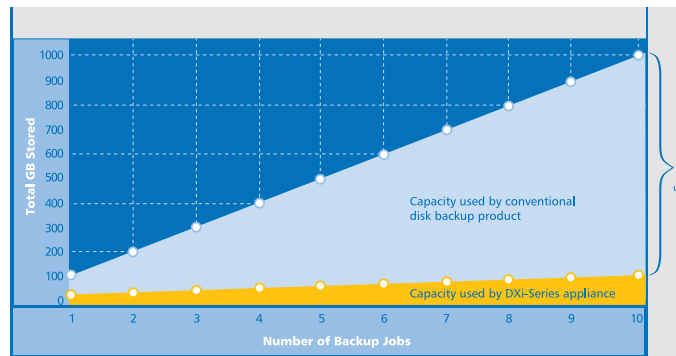
Advanced Data De-duplication Increases Disk Retention for Backup Data

QUANTUM'S INTEGRATED SOFTWARE LAYER

In developing the DXi-Series appliance family, Quantum leveraged the company's new integrated software layer to provide a combination of enterprise performance and industry-leading functionality. This core set of advanced software elements includes patented de-duplication techniques, high performance file-system technology, in-line compression, asynchronous replication, and built-in monitoring, alerting and diagnostic tools. Quantum's integrated software layer provides a foundation for a new generation of intelligent backup, recovery and archive solutions that will improve data protection for a broad range of customer environments from small remote offices to large enterprise data centers.

The DXi-Series disk backup and replication appliances leverage Quantum's patented data de-duplication technology to dramatically increase the role that disk can play in the protection of critical data. With DXi-Series solutions, users can retain 10 to 50 times more backup data on fast recovery disk than with conventional arrays. This advantage allows IT departments to cost-effectively retain months of backup data on disk for primary data sets ranging from 250GB to more than 10TB. The results are faster, more reliable restores and a substantially increased number of data recovery points. Quantum's innovative implementation of this core technology means that users do not have to compromise on performance to take advantage of extended retention capability. DXi-Series appliances provide true enterprise backup speeds of up to 800GB per hour, allowing users to complete critical jobs during short backup windows.

ADVANTAGE OVER CONVENTIONAL DISK



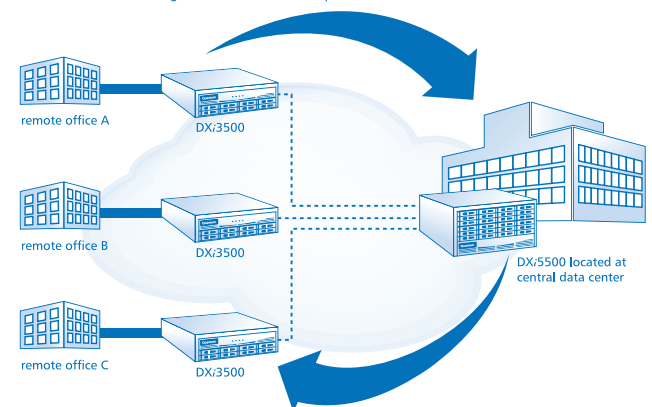
The DXi Series' data de-duplication technology eliminates the need to store redundant data, letting users retain 10 to 50 times more backup data on disk than conventional storage systems.

Remote Replication of Backup Data Provides Automated Disaster Recovery Protection

Today most backup occurs on isolated devices, making it difficult to deploy disk backup when disaster recovery protection is required. DXi-Series appliances use Quantum's de-duplication technology to decrease the bandwidth required to move backup data between sites by 10 to 50 times. This gain makes it practical and cost-effective for users to replicate backup data over WANs for secure, network-based disaster recovery protection, and it allows users to combine rapid, local restores with sound disaster recovery protection. With DXi-Series replication, users can transmit data from a single site or multiple sites to a central location. DXi-Series replication is asynchronous, automated, and it operates as a background process. This model for protecting the distributed enterprise—Quantum's Advanced Distributed Backup Initiative—allows users to combine disk, replication and tape for an optimal combination of performance, simplicity, and security.

Quantum's Replication Technology

Users can transmit data from a single site or multiple sites to a central location over existing WANs for automated DR protection



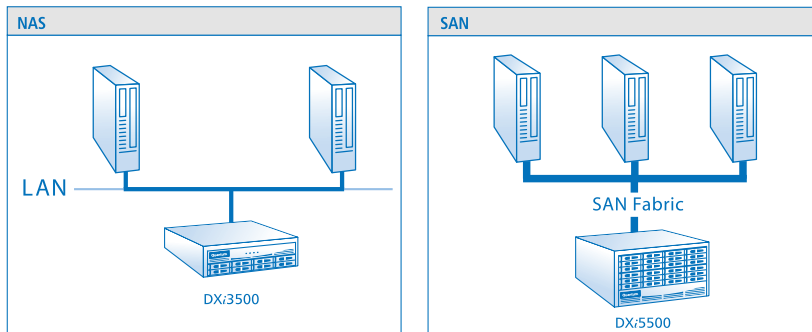
DXi3500 / DXi5500

DXi-Series Solutions are Easy-To-Install and Use in Existing Environments

Trying to use primary disk for backup can make data protection more complex because disk volumes require ongoing capacity management and are not easily shared. The DXi-Series are integrated appliances with an intuitive graphical user interface and two presentation modes that make them easy to install, share, and manage. A backup NAS interface allows users to attach a DXi-Series appliance to any Ethernet network and share it easily between multiple media servers. For larger, SAN environments, or where high performance is critical, a virtual tape library interface (Fibre Channel or iSCSI) gives users enterprise performance and lets them use standard tape library presentations. These multiple interfaces, which can be deployed simultaneously in the same unit, make it easy to deploy DXi-Series appliances with existing backup applications and architectures.

Easy Fibre Channel and Gigabit Ethernet Connectivity

Multiple interfaces can be deployed simultaneously in the same DXi-Series appliance.



DXi appliances offer NAS and virtual tape library interfaces, and they let users deploy both presentations in the same unit.

Part of a Comprehensive, Supported Solution from the Leading Backup, Recovery, and Archive Specialist

The DXi-Series appliances represent a major step forward in making disk backup an easily deployed and practical part of a comprehensive data protection strategy. Protecting critical data in distributed sites often requires a combination of approaches and technologies depending on data volume and types, recovery objectives, time constraints, budgets, and long term retention policies. As the leading global supplier of backup, recovery, and archive solutions, Quantum offers a full line of backup solutions, and a team of technical advisors to help users make the right choice for their environment. All of the solutions—whether they are based on disk, replication, tape or a combination of technologies—are supported by Quantum's innovative StorageCare Guardian technology and the industry's premier global service organization dedicated to backup, recovery, and archive.



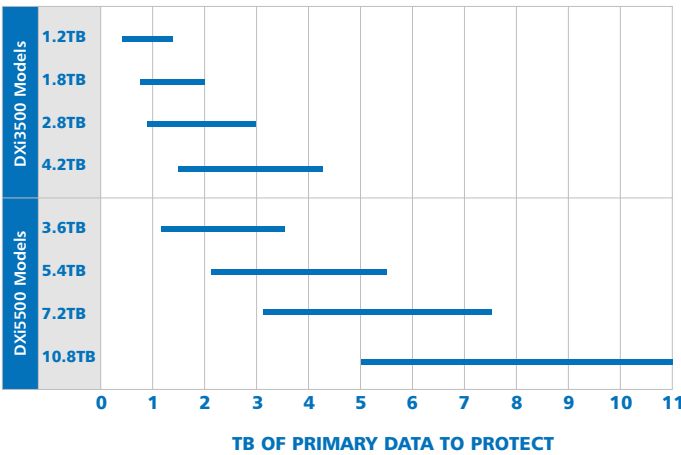
MODELS AND CAPACITIES

DXi3500 Disk Backup Appliances				
Models (usable cap)	1.2TB	1.8TB	2.8TB	4.2TB
Retention Capacity @ 20:1*	24TB	36TB	56TB	84TB
Retention Capacity @ 50:1*	60TB	90TB	140TB	210TB

DXi5500 Disk Backup Appliances				
Models (usable cap)	3.6TB	5.4TB	7.2TB	10.8TB
Retention Capacity @ 20:1*	72TB	108 TB	144TB	216TB
Retention Capacity @ 50:1*	180TB	270 TB	360TB	540TB

*Capacities and amount of data protected assume standard business data mix and extended on-disk data retention. 20:1 capacity ratio assumes a weekly full and daily incremental backup model. 50:1 capacity ratio assumes daily full backups. Actual results will vary with data type, change rates, and backup methodologies. Smaller DXi-Series appliances can be scaled in-chassis and on-site to specific larger units: DXi3500 1.2 TB units scale to 2.8 TB units; DXi3500 1.8 TB units scale to 4.2 TB units; DXi5500 3.6 TB units scale to 7.2 TB units; DXi5500 5.4 TB units scale to 10.8 TB units

MATCHING DXI-SERIES APPLIANCES TO PRIMARY DATA SETS



INTERFACES

NAS Backup Target: NFS or CIFS
Virtual Library: Fibre Channel or iSCSI connectivity
 Different partitions in same appliance can present different interfaces simultaneously

PERFORMANCE	DXi3500	DXi5500
	up to 290GB/hour	up to 800GB/hour

VIRTUAL LIBRARY	DXi3500	DXi5500
-----------------	---------	---------

Virtual library partitions: 1-8
Virtual Drives, max: 1-32
Virtual Cartridges, max: 1600
Drives, library emulations: Library: ADIC Scalar 24, Scalar 100, Scalar i500, Scalar i2000; ATL P1000, ATL P7000; Quantum M2500, PX500 Series Drives: DLT7000, SDLT 320, SDLT 600, SLT-54; LTO-1, LTO-2, LTO-3

REPLICATION

Asynchronous, one-to-one or multiple-to-one configurations; partitions in same unit act as replication source or target; units with partitions acting as replication targets can also support local backup.

HOST TO APPLIANCE H/W INTERFACE

10/100/1000 BaseT Ethernet, 2 Gb Fibre Channel

POWER INPUT	DXi3500	DXi5500
	Power Cord NEMA 5-15P to C13 3 connectors	Power Cord NEMA 5-15P to C13 4 connectors

POWER ENVIRONMENT

Input Voltages:	100 to 240 VAC	110 to 240 VAC
Rated Frequency:	50 to 60 Hz	50 to 60 Hz
Rated Current:	4A @ 230 VACx2	5A @230 VACx4

CLIMATIC ENVIRONMENT

Temperature Operating:	50° to 95°F (10° to 30°C)	50° to 95°F (10° to 30°C)
Shipping & Storage:	-4° to 140°F (-20° to 60°C)	-4° to 140°F (-20° to 60°C)
Relative Humidity Operating:	20 to 80% non-condensing	20 to 80% non-condensing
Shipping & Storage:	15 to 95% non-condensing	15 to 95% non-condensing
Altitude Operating:	0 to 10,000ft (0 to 3,048m)	0 to 10,000ft (0 to 3,048m)
Shipping & Storage:	0 to 39,370ft (0 to 12,000m)	0 to 39,370ft (0 to 12,000m)
Thermal, Operating:	1,706 BTU/hour	2,560 BTU/hour

PHYSICAL SPECIFICATIONS

	DXi3500	DXi5500
Width (in/cm)	19 / 48.3	19 / 48.3
Height (in/cm)	3.5 / 8.8 2U	8.75 / 22.2 5U
Length (in/cm)	27 / 68.5	25.4 / 64.5
Weight (lbs/kg)	50 / 22.68	122 / 55.34

Quantum For contact and product information, visit quantum.com or call 800-677-6268

Quantum

Backup. Recovery. Archive. It's What We Do.

©2006 Quantum Corporation. All rights reserved. Quantum, the Quantum logo, and all other logos are registered trademarks of Quantum Corporation or of their respective owners.

About Quantum

Quantum Corp. (NYSE:QTM) is the leading global storage company specializing in backup, recovery and archive. Combining focused expertise, customer-driven innovation, and platform independence, Quantum provides a comprehensive range of disk, tape, media and software solutions supported by a world-class sales and service organization. As a long-standing and trusted partner, the company works closely with a broad network of resellers, OEMs and other suppliers to meet customers' evolving data protection needs.