



# 3Com® Wireless 8760 Dual-Radio 11a/b/g PoE Access Point

DATA SHEET

Secure, reliable  
108 Mbps PoE wireless  
connectivity in a  
cost-effective access  
point with advanced  
enterprise-class  
features and dual  
radios

## OVERVIEW

The 3Com® Wireless 8760 Dual-Radio 11a/b/g PoE Access Point is a Power over Ethernet (PoE) wireless solution for enterprises of all sizes. This fully-featured dual-radio access point functions simultaneously with an IEEE 802.11b/g and an IEEE 802.11a radio and provides ultra-fast speeds of up to 108 Mbps. Advanced security features such as Wi-Fi Protected Access (WPA/ WPA2), Wired Equivalent Privacy (WEP) and Open System are included. This new access point also provides multiple SSID support and VPN passthrough along with VLAN support.

## KEY BENEFITS

### ENABLING WIRELESS FREEDOM

Take advantage of the freedom of high-speed networking without wires with the Wi-Fi CERTIFIED 3Com Wireless 8760 Dual-Radio 11a/b/g PoE Access Point. Wireless LANs (WLANS) are an attractive solution for cost-effectively and securely extending mobile access to wired network resources or creating full-featured networks in small and medium businesses, remote sites, or temporary locations. Each access point (AP) supports up to 64 wireless users per radio for a total of 128 users, leaving plenty of room for growth.

### PROVIDES PoE DEPLOYMENT FLEXIBILITY

PoE support makes it easier than ever to overcome installation problems by eliminating the need for an AC power plug at each AP. The 3Com Baseline Switch 2226-PWR Plus or the Switch 4400/4500/5500 PWR or other IEEE 802.3af-compliant PoE products supply both power and data to the access points through Category 5 or 6 Ethernet cable, providing flexible installation options in hard-to-wire locations. For convenience a PoE adapter is supplied with the unit.



3Com Wireless 8760 Dual-Radio 11a/b/g PoE Access Point

## KEY BENEFITS

(CONTINUED)

### SECURES AND PROTECTS WIRELESS COMMUNICATIONS

This new access point delivers enterprise-class security to businesses of all sizes. To shield wireless communications at the source, WPA and WPA2 encryption provide the latest, toughest standards-based security; WEP encryption is also supported. For additional protection, the access point supports IEEE 802.1X and MAC address access control, authentication and authorization through backend RADIUS servers.

### PROVIDES FLEXIBLE SECURITY AND ACCESS CONTROL

Configure and store up to four SSIDs with different security profiles for groups of users. IEEE 802.1Q-compliant VLAN support works with the multiple SSID feature to control access to network resources and segment user traffic.

### SOLVES COMPLEX CONNECTIVITY PROBLEMS

The Wireless Distribution System bridging feature solves complex wireless connectivity problems. The access point supports both point-to-point and point-to-multipoint WDS links as well as repeater mode for flexible network deployment.

### DELIVERS ENTERPRISE-CLASS FEATURES

3Com delivers superior business value by offering enterprise-class solutions without the complexity. 3Com also backs each product with global sales, service and support along with technology, financial and operational strength.

## FEATURES AND BENEFITS

### FLEXIBLE HIGH-SPEED CONNECTIVITY

Dual-radio support	Supports and offers 802.11a and 802.11b/g radios.
High-speed access	802.11a and 802.11b/g standard supports speeds up to 108Mbps.
Wi-Fi a/b/g CERTIFIED	Helps ensure interoperability with Wi-Fi CERTIFIED products from other vendors.

### ROBUST SECURITY FEATURES

Encryption: WPA/WPA2, AES, TKIP and WEP	Toughest industry-standard algorithms help keep wireless transmissions private.
Multiple security profiles	Store up to eight different security settings; up to four security profiles per radio.
Multiple SSID support with SSID isolation	SSIDs can be bridged together or isolated.
Access control	Screens device MAC addresses to ensure that only trusted clients gain access to the WLAN.
802.1Q VLAN support	Groups users according to data or traffic requirements to segment traffic flow based on business priorities.
RADIUS server MAC-based and 802.1X AAA support	Centralizes wireless security through existing network RADIUS servers.

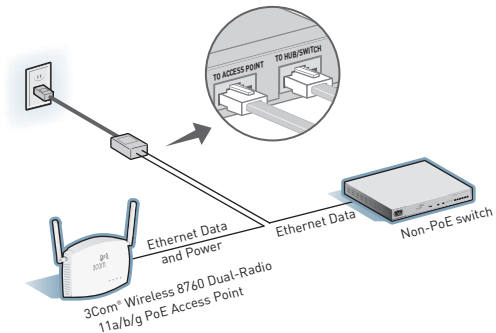
## FEATURES AND BENEFITS (CONTINUED)

### INSTALLATION AND MANAGEMENT CONVENIENCE

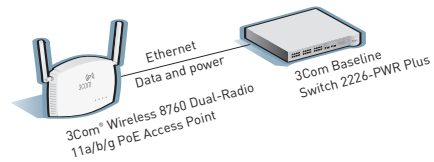
WDS bridge and repeater configuration	Multiple APs can function as bridges supporting point-to-point or multi-point modes; repeater mode extends wireless coverage.
PoE support	Expands installation options by eliminating the need for power adapters and AC outlets for APs.
Access Point Discovery program	Automatically discovers AP devices to simplify configuration and management (PCs with Windows based operating systems only).
SNMP support	Enables the AP to be centrally managed by popular standards-based network management applications such as SNMP v1, v2c and v3.
Syslog support	Enables the AP to be centrally monitored by sending data to the network Syslog server.
Web browser-based administration	Familiar browser interface lets you configure and manage APs from anywhere on the network.

### PoE Support

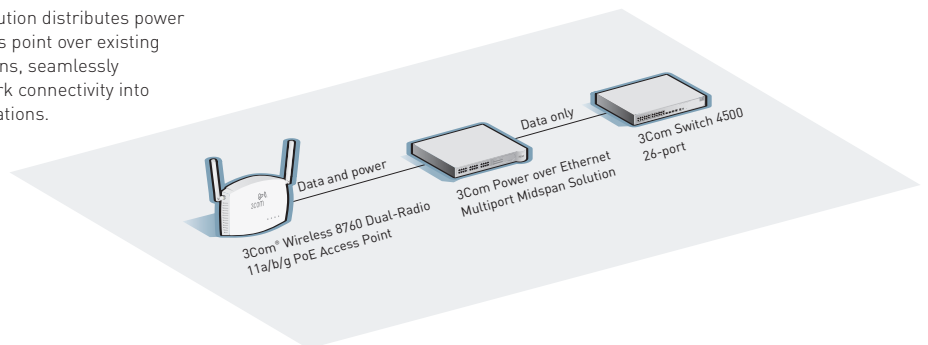
Choose from several power options to match your installation needs. First, the PoE access point can be powered with the supplied PoE injector.



The access point can also be powered using an 802.3af-compliant PoE switch. The switch provides both data and power through the Ethernet cable.

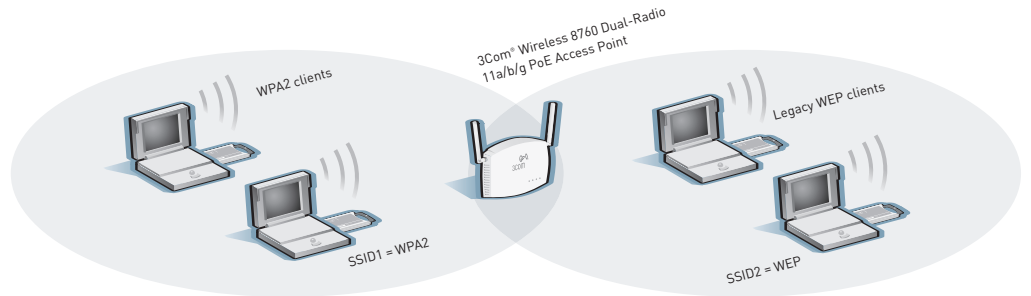


The Midspan solution distributes power to the PoE access point over existing switch connections, seamlessly extending network connectivity into hard-to-wire locations.



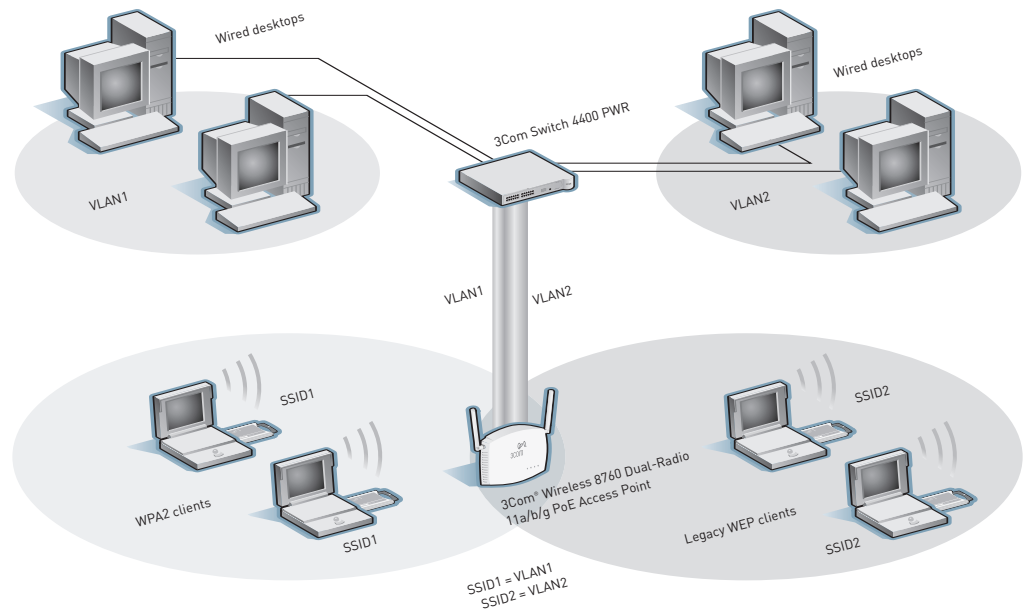
### Multiple SSID Support

Multiple SSID support enables many flexible configurations, including supporting multiple client security schemes simultaneously—no need to dumb down the wireless network to support a few legacy WEP devices.



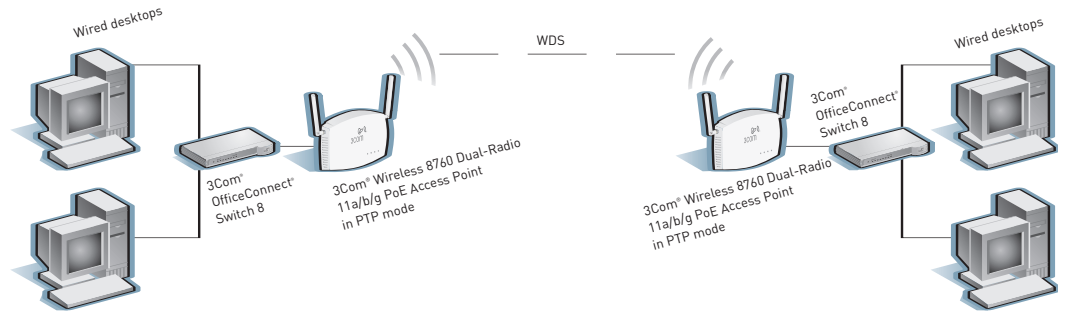
### Multiple SSID and VLAN Support

With the 3Com Wireless 8760 Dual-Radio 11a/b/g PoE Access Point, a single Ethernet link supports multiple VLAN traffic tunnels.



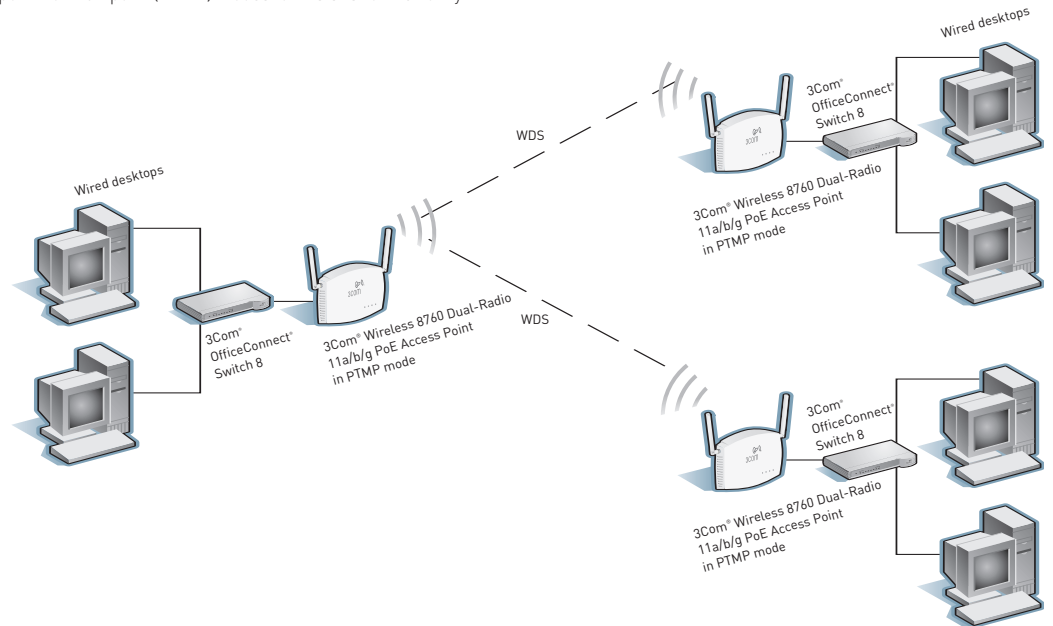
**Point-to-Point WDS Link**

The 3Com Wireless 8760 Dual-Radio 11a/b/g PoE Access Point connects wired LANs with a wireless WDS link. The APs act as wireless bridges, forwarding traffic between LANs.



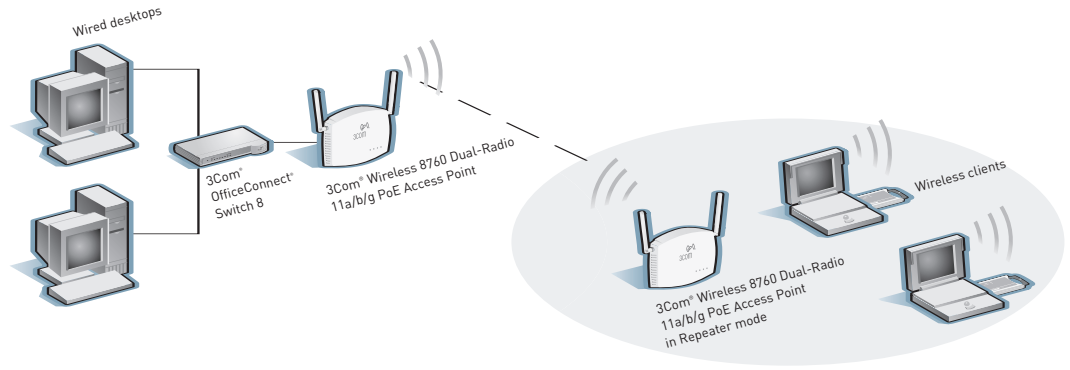
**Point-to-Multipoint WDS Link**

The 3Com Wireless 8760 Dual-Radio 11a/b/g PoE Access Point can function as a wireless bridge in either point-to-point (PTP) or point-to-multipoint (PTMP) modes for installation flexibility.



### Wireless Repeater mode

The 3Com Wireless 8760 Dual-Radio 11a/b/g PoE Access Point can also extend the range of WLANs by acting as a wireless repeater, forwarding traffic between associated wireless workstations and another AP connected to the wired LAN.



## SPECIFICATIONS

### MINIMUM SYSTEM REQUIREMENTS

Computer with an Ethernet 10BASE-T, 10/100, or 10/100/1000 interface configured for Internet communication

Operating system that supports an Ethernet connection with an IP stack (Installation CD Discovery Application requires Windows XP, or Windows 2000)

PCs and laptops require 802.11a or 802.11b/g adapter cards for wireless access

### MEDIA INTERFACES

RJ-45, IEEE 802.11a, 802.11b, 802.11g  
One 10BASE-T/100BASE-TX IEEE 802.3af-compatible PoE port with auto-negotiation

### DATA RATES

802.11a: 54, 48, 36, 24, 18, 12, 9, 6 Mbps

802.11b,g: 54, 48, 36, 24, 18, 12, 11, 9, 6, 5.5, 2, 1 Mbps

802.11a/g turbo mode: 108, 96, 72 Mbps

### FREQUENCY BAND

802.11a: 5 GHz; 802.11b/g: 2.4 GHz

### USERS SUPPORTED

Up to 64 simultaneous 802.11b/g wireless users per radio for a total of 128

### OPERATING RANGE

802.11a: up to 50 meters (164 feet) transmit and receive

802.11b/g: up to 100 meters (328 feet) transmit and receive

Unobstructed range maximum: 457 meters (1,499 feet)

### OPERATING CHANNELS:

Channel availability depends on local country regulations. Wireless LAN system administrator must choose correct country of operation. Channels are then automatically configured to comply with specified country regulations.

### MODULATION TECHNIQUE

DSSS (Direct Sequence Spread Spectrum)  
OFDM (Orthogonal Frequency Division Multiplexing)

### MEDIA ACCESS PROTOCOL

CSMA/CA

### POWER CONSUMPTION

7.2 watts of PoE power with both radios active

## SPECIFICATIONS (CONTINUED)

### TRANSMIT POWER SETTINGS

Based on the regulatory domain set by the system administrator, not to exceed the following:

#### 802.11a

6 Mbps:  $\geq +18$  dBm  
 9 Mbps:  $\geq +18$  dBm  
 12 Mbps:  $\geq +18$  dBm  
 18 Mbps:  $\geq +18$  dBm  
 24 Mbps:  $\geq +18$  dBm  
 36 Mbps:  $\geq +18$  dBm  
 48 Mbps:  $\geq +16$  dBm  
 54 Mbps:  $\geq +16$  dBm

#### 802.11b/g

1–11 Mbps:  $\geq +18$  dBm  
 12 Mbps:  $\geq +18$  dBm  
 18 Mbps:  $\geq +18$  dBm  
 24 Mbps:  $\geq +18$  dBm  
 36 Mbps:  $\geq +18$  dBm  
 48 Mbps:  $\geq +16$  dBm  
 54 Mbps:  $\geq +16$  dBm

### RECEIVE SENSITIVITY

#### 802.11a

6 Mbps:  $\leq -87$  dBm  
 9 Mbps:  $\leq -86$  dBm  
 12 Mbps:  $\leq -84$  dBm  
 18 Mbps:  $\leq -82$  dBm  
 24 Mbps:  $\leq -79$  dBm  
 36 Mbps:  $\leq -75$  dBm  
 48 Mbps:  $\leq -72$  dBm  
 54 Mbps:  $\leq -71$  dBm

#### 802.11b/g

1 Mbps:  $\leq -95$  dBm  
 2 Mbps:  $\leq -92$  dBm  
 5.5 Mbps:  $\leq -91$  dBm  
 6 Mbps:  $\leq -89$  dBm  
 9 Mbps:  $\leq -88$  dBm  
 11 Mbps:  $\leq -88$  dBm  
 12 Mbps:  $\leq -86$  dBm  
 18 Mbps:  $\leq -84$  dBm  
 24 Mbps:  $\leq -81$  dBm  
 36 Mbps:  $\leq -77$  dBm  
 48 Mbps:  $\leq -73$  dBm  
 54 Mbps:  $\leq -72$  dBm

### STANDARDS CONFORMANCE

IEEE 802.11a, 802.11b, 802.11g, 802.11i, 802.3, 802.3af, 802.1X; WEP, AES, WPA, WPA2, WMM and Wi-Fi CERTIFIED

### ANTENNA

2 removable 2dB gain antennas with R-SMA connector

### SECURITY

WPA2 AES and TKIP encryption; 64/128/152-bit WEP encryption; 802.1X with EAP-TLS, EAP-TTLS and PEAP; WPA-PSK authentication; MAC address authentication and filtering; 802.1Q VLAN; multiple SSID; RADIUS client authentication, authorization and accounting

### NETWORKING PROTOCOLS

TCP/IP, Bridging Protocol, DHCP, HTTP, HTTPS, SSH, Telnet

### PERFORMANCE

Dynamic rate shifting  
 Packet bursting  
 Clear channel connect  
 802.11a/b/g SuperG mode

### MANAGEMENT

SNMP v1, v2c and v3 support  
 Remote management with Web browser over SSL or HTTPS; command line interface over SSH v2 or Telnet

### LEDS

Power, 10/100 Mbps, 802.11b/g activity, or 11g activity

### DIMENSIONS AND WEIGHT

Height: 15.9 cm (6.25 in)  
 Width: 21.91 cm (8.625 in)  
 Depth: 4.13 cm (1.625 in)  
 Weight: 544.31 g (1.2 lb)

### REGULATORY/AGENCY APPROVALS

#### Safety

UL/CSA 60950-1  
 EN/IEC 60950-1  
 NOM-019- SCFI

#### EMC/EMI

FCC 15 Subpart C  
 IC RSS-210  
 EN 300 328  
 EN 301 893  
 EN 301 489-1, -17  
 EN 60601

### ENVIRONMENTAL RANGES

Operating temperature:  $-10$  to  $40^{\circ}\text{C}$   
 ( $14$  to  $122^{\circ}\text{F}$ )  
 Storage temperature:  $-40$  to  $70^{\circ}\text{C}$   
 ( $-40$  to  $158^{\circ}\text{F}$ )  
 Humidity: 10 to 95% non-condensing

### PACKAGE CONTENTS

3Com Wireless 8760 Dual-Radio 11a/b/g PoE Access Point  
 2 external dual-band 2.4/5.15GHz antennas with R-SMA connectors  
 Mounting hardware  
 PoE injector (3CNJPSE)  
 1.6 m CAT 5 cable  
 Quick Installation Guide  
 Support and Safety sheet  
 Warranty sheet  
 Product range sheet  
 CD with Discovery application and documentation

### WARRANTY AND OTHER SERVICES

Three-year hardware warranty.  
 Advanced hardware replacement and 90 days free technical support. Refer to [www.3com.com/warranty](http://www.3com.com/warranty) for details.

## ORDERING INFORMATION

PRODUCT DESCRIPTION	MODEL NO	3COM SKU
3Com Wireless 8760 Dual-Radio 11a/b/g PoE Access Point	WL-546	3CRWE876075
<b>Managed Wireless LAN Access Point Antenna Options</b>		
3Com 6/8dBi Dual-Band Omni Antenna		3CWE591
3Com 3/4dBi Dual-Band Ceiling Mount Antenna		3CWE592
3Com 18/20dBi Dual-Band Panel Antenna		3CWE596
3Com 4/6dBi Dual-Band Hallway Antenna		3CWE597
3Com 8/10dBi Dual-Band Panel Antenna		3CWE598
<b>Antenna Cables</b>		
3Com Ultra Low Loss 6 Foot Antenna Cable		3CWE580
3Com Ultra Low Loss 20-Foot Antenna Cable		3CWE581
3Com Ultra Low Loss 50-Foot Antenna Cable		3CWE582
3Com RSMA to SMA 6" Antenna Cable		3CWE586
<b>3Com Wireless LAN-Related Products</b>		
3Com Power over Ethernet Single-Port Midspan Solution		3CNJPSE
3Com Power over Ethernet Multiport Midspan Solution (24 Ports)		3CNJPSE24
3Com Switch 5500-EI PWR 28-port		3C17171-91
3Com Switch 5500-EI PWR 52-port		3C17172-91
3Com Switch 4400 PWR		3C17205
3Com Baseline Switch 2226-PWR Plus		3C16490
3Com OfficeConnect® Managed Switch 9		3CR16708-91
<b>PC Cards with XJACK® Antennas</b>		
3Com Wireless 11a/b/g PC Card with XJACK® (108 Mbps)		3CRPAG175B
3Com OfficeConnect Wireless 108 Mbps 11g XJACK® PC Card		3CRXJK10075
<b>PC Cards with Fixed Antennas</b>		
3Com OfficeConnect Wireless 54 Mbps 11g PC Card		3CR6PC10075
<b>USB Adapters</b>		
3Com OfficeConnect Wireless 108 Mbps 11g USB Adapter (Swivel Base)		3CRUSB20075
3Com OfficeConnect Wireless 54 Mbps 11g Compact USB Adapter		3CRUSB10075
<b>PCI Adapter</b>		
3Com Wireless 11a/b/g LAN PCI Card (108 Mbps)		3CRDAG675B
<b>3Com Global Services</b>		
3Com Wireless LAN Site Survey, Network Health Check, Installation Services and Express <sup>SM</sup> Maintenance		<a href="http://www.3com.com/services_quote">www.3com.com/services_quote</a>
3Com University Courses		<a href="http://www.3com.com/3comu">www.3com.com/3comu</a>

For additional information, please visit [www.3com.com](http://www.3com.com)

Visit [www.3com.com](http://www.3com.com) for more information about 3Com secure converged network solutions.

3Com Corporation, Corporate Headquarters, 350 Campus Drive, Marlborough, MA 01752-3064  
3Com is publicly traded on NASDAQ under the symbol COMS.

Copyright © 2006 3Com Corporation. All rights reserved. 3Com, the 3Com logo, OfficeConnect, and XJACK are registered trademarks, and Express is a service mark, of 3Com Corporation. All other company and product names may be trademarks of their respective companies. Wireless speed and performance depend on number of users, physical conditions, and other electronic devices in the area. While every effort is made to ensure the information given is accurate, 3Com does not accept liability for any errors or mistakes which may arise. All specifications are subject to change without notice.

400991-004 09/06

