



# 3Com® 11a/b/g Wireless LAN Workgroup Bridge

DATA SHEET

Secure and reliable  
wireless connections  
that extend the  
network

## OVERVIEW

Extend the functionality of your network with the 3Com® 11a/b/g Wireless LAN Workgroup Bridge. The bridge provides LAN-to-LAN secure wireless connectivity for remote LAN segments or devices, creating a mixed wired and wireless network at a much lower cost while maintaining flexibility as business needs and network designs change.

## KEY BENEFITS

### SECURE NETWORK CONNECTIONS

The 3Com 11a/b/g Wireless LAN Workgroup Bridge supports WPA/WPA2 and AES, providing the latest industry standard security; WEP support provides compatibility with legacy wireless networks. IEEE 802.1X server authentication helps protect against unauthorized network access. The bridge allows up to 16 devices to be securely connected through it to the network.

### WI-FI 802.11 A/B/G SUPPORT

The wireless bridge supports IEEE 802.11 a (5.1 GHz) and b/g (2.4 GHz) networking standards. This preserves existing wireless equipment investments while supporting the latest higher-speed technologies.

### WIFI-ENABLE LEGACY DEVICES

Use the embedded serial port to connect various devices—cash registers, deli and vegetable scales, time clocks, bar code readers, and more—to the wireless network, without the costly burden of retrofitting existing equipment or running extra cabling. This workgroup bridge may also be used as a wireless terminal server.

### CONVENIENT INSTALLATION AND MANAGEMENT

Setup wizard software makes installation and configuration easy. Once setup is complete, the bridges can be remotely managed using a standard web browser, CLI or SNMP management tools.

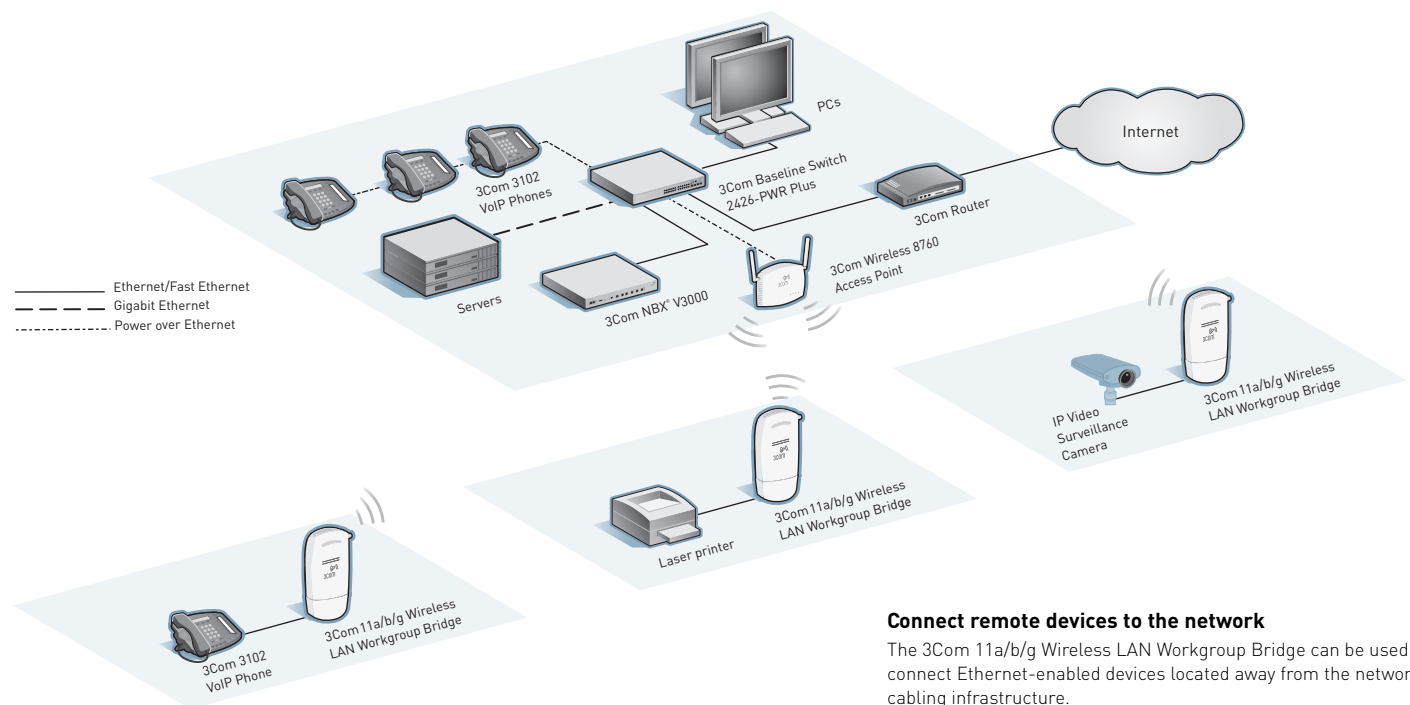


3Com 11a/b/g Wireless LAN Workgroup Bridge

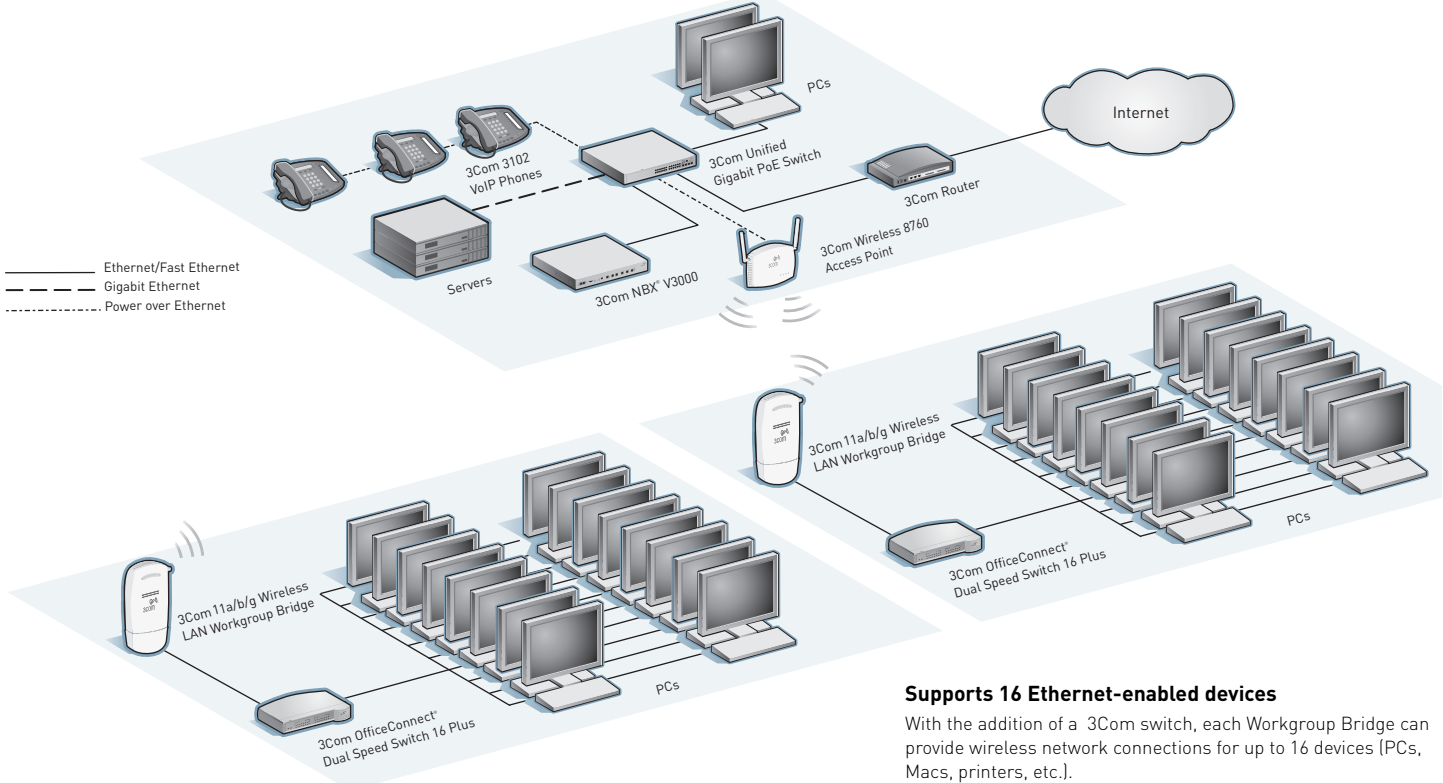
## FEATURES AND BENEFITS

Feature	Benefit
<b>ECONOMICAL, HIGH-SPEED CONNECTIVITY</b>	
Wired and wireless user support	Enables legacy wired Ethernet network devices to be quickly, easily and securely connected to the wireless LAN. Each bridge is capable of supporting up to 16 Ethernet wired connections.
High-speed 108 Mbps data rate	Provides bandwidth and performance necessary for multi-media applications.
<b>OPEN AND FLEXIBLE</b>	
Wi-Fi CERTIFIED a/b/g	Ensures bridge interoperability with other Wi-Fi certified products.
Antenna choices	Includes internal dual-diversity antennas. Optional external dual-band antenna extends the wireless transmission range and adds installation flexibility.
Serial port	Avoid expensive upgrades or retrofitting of legacy products such as cash registers, deli and vegetable scales, time clocks, bar code readers, etc. by connecting to the wireless network via the serial port of the bridge. Serial port can also be used for bridge management functions. Workgroup bridge can function as wireless terminal server.
<b>SECURE AND RELIABLE</b>	
WPA/TKIP and WPA2/AES; WEP	Toughest industry-standard algorithms help keep wireless transmissions private. WEP support provides compatibility with legacy wireless networks.
IEEE 802.1X authentication	Provides LAN client and wireless authentication, so that only authorized users access the network.
<b>INSTALLATION AND MANAGEMENT CONVENIENCE</b>	
Setup wizard	Simplifies setup procedures.
Web browser, SNMP and 3Com Network Director support	Bridge is easily managed through a variety of interfaces and can be effortlessly integrated with existing network management tools.

## 3COM 11A/B/G WIRELESS LAN WORKGROUP BRIDGE: SAMPLE DEPLOYMENTS

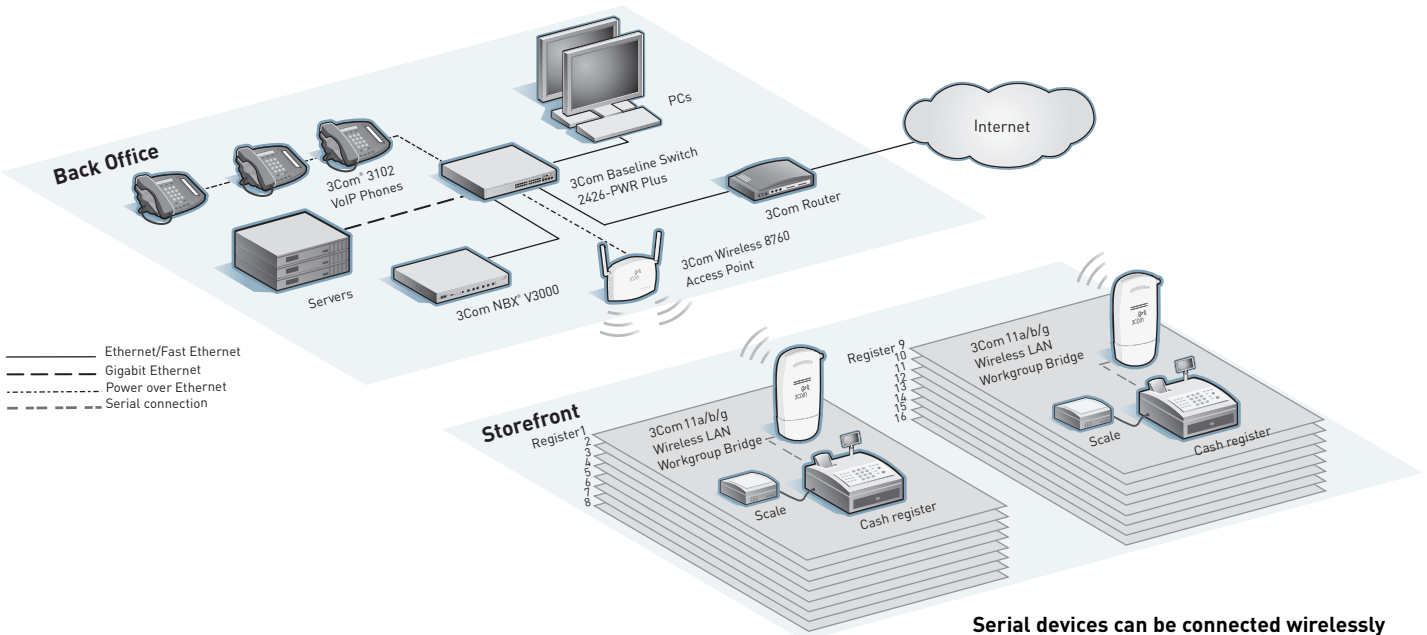


3COM 11A/B/G WIRELESS LAN WORKGROUP BRIDGE: SAMPLE DEPLOYMENTS (CONTINUED)



**Supports 16 Ethernet-enabled devices**

With the addition of a 3Com switch, each Workgroup Bridge can provide wireless network connections for up to 16 devices (PCs, Macs, printers, etc.).



**Serial devices can be connected wirelessly**

Utilizing the serial port of the Workgroup Bridge, legacy devices that have only a serial port can be connected to an Ethernet network.

## SPECIFICATIONS

### MEDIA INTERFACES

10BASE-T/100BASE-TX (RJ-45)  
IEEE 802.11a/b/g  
DB9 serial connector

### SUPPORTED DEVICES

Any Ethernet-equipped device (PCs, Macs, Linux and Unix workstations, network printers, etc.)  
Serial port appliances

### WIRELESS DATA RATES

802.11a/g: 6, 9, 12, 18, 24, 35, 48 and 54 Mbps; up to 108 Mbps (turbo mode)  
802.11b: 1, 2, 5.5 and 11 Mbps

### FREQUENCY BAND

802.11a: 5.150-5.825 GHz  
802.11b/g: 2.4-2.4835 GHz

### USERS SUPPORTED

Up to 16 client devices

### OPERATING CHANNELS

Use of this product is only authorized for the channels approved by each country. To conform to FCC and other country restrictions, this product may be limited in the channels that are available.

### MODULATION TECHNIQUE

DSSS (Direct Sequence Spread Spectrum)  
OFDM (Orthogonal Frequency Division Multiplexing)

### MEDIA ACCESS PROTOCOL

CSMA/CA

### TRANSMIT POWER SETTINGS

Based on the regulatory domain set by the system administrator, not to exceed the following:

802.11a: 16 dBm @ 54 Mbps  
802.11b/g: 18 dBm @ 54 Mbps

### RECEIVE SENSITIVITY

802.11a  
54 Mbps: -68 dBm  
48 Mbps: -69 dBm

36 Mbps: -73 dBm  
24 Mbps: -77 dBm  
18 Mbps: -80 dBm  
12 Mbps: -82 dBm  
9 Mbps: -84 dBm  
6 Mbps: -85 dBm

### 802.11b

11 Mbps: -88 dBm  
5.5 Mbps: -90 dBm  
2 Mbps: -91 dBm  
1 Mbps: -94 dBm

### 802.11g

54 Mbps: -72 dBm  
48 Mbps: -73 dBm  
36 Mbps: -77 dBm  
24 Mbps: -81 dBm  
18 Mbps: -84 dBm  
12 Mbps: -86 dBm  
9 Mbps: -88 dBm  
6 Mbps: -89 dBm

### STANDARDS CONFORMANCE

IEEE 802.11a, 802.11b, 802.11g, 802.1X, 802.3; Wi-Fi CERTIFIED WPA and WPA2 (Enterprise and Personal editions), WEP

### ANTENNA

Internal dual-diversity antenna  
Optional 2.4/5 GHz dual-band omni-directional antenna

### SECURITY

WPA/TKIP, WPA2/AES (128-bit)  
40/64-, 104/128-, 128/152-bit WEP  
IEEE 802.1X wireless client support and wired LAN authentication  
EAP-TLS, PEAP and LEAP-compatible authentication

### NETWORKING PROTOCOLS

NetBEUI, IPX, TCP/IP, SNMP, DHCP

### MANAGEMENT

CLI via Telnet or serial connection  
HTTP or HTTPS web browser interface  
SNMP v1 and 2  
3Com Network Director and other SNMP-complaint tools

### LEDS

Power  
Connection type: 802.11a, 802.11b/g, 100 Mbps, 10 Mbps

### DIMENSIONS

Length: 16.5 cm (6.5 in)  
Width: 35 cm (13.78 in)  
Height: 3.0 cm (1.2 in)

### REGULATORY/AGENCY APPROVALS

**Safety**  
UL/CSA 60950, EN/IEC 60950

### Radio/ Electromagnetic

FCC Parts 15.247 and 15.407, RSS-210, EN 300 328-2, EN 301 893

### Emissions/Immunity

FCC Part 15 Subpart B, ICES-003, EN 301 489-17

### Specific Absorption Rate (SAR)

FCC OET Bulletin 65, RSS-102, EN 50371

### ENVIRONMENTAL RANGES

Operating temperature: 0° to 40°C (32° to 104°F)

Humidity (operating): 10% to 95% non-condensing

### PACKAGE CONTENTS

3Com 11a/b/g Wireless LAN Workgroup Bridge  
Power supply and cable  
RJ-45 LAN cable  
Quick Start guide  
CD with user guide and configuration software  
Warranty booklet

### WARRANTY AND OTHER SERVICES

One Year Limited Hardware Warranty.  
Limited Software Warranty for 90 days.  
90 days of telephone technical support.  
Refer to [www.3com.com/warranty](http://www.3com.com/warranty) for details.

### PLEASE NOTE

*This workgroup bridge is designed to be used in a mounted, stationary position.*

## ORDERING INFORMATION

### PRODUCT DESCRIPTION

3Com 11a/b/g Wireless LAN Workgroup Bridge

### 3COM SKU

3CRWE675075

### Antenna

3Com 2.4/5 GHz Omnidirectional Workgroup Bridge Antenna

3CWE501

### 3Com Global Services

3Com Wireless LAN Site Survey, Network Health Check,  
Installation Services and Express<sup>SM</sup> Maintenance [www.3com.com/services\\_quote](http://www.3com.com/services_quote)  
3Com University Courses [www.3com.com/3comu](http://www.3com.com/3comu)

Visit [www.3com.com](http://www.3com.com) for more information about 3Com secure converged network solutions.

3Com Corporation, Corporate Headquarters, 350 Campus Drive, Marlborough, MA 01752-3064  
3Com is publicly traded on NASDAQ under the symbol COMS.

Copyright © 2007 3Com Corporation. All rights reserved. 3Com, the 3Com logo and OfficeConnect are registered trademarks, and Express is a service mark, of 3Com Corporation. All other company and product names may be trademarks of their respective companies. Wireless speed and performance depend on number of users, physical conditions, and other electronic devices in the area. While every effort is made to ensure the information given is accurate, 3Com does not accept liability for any errors or mistakes which may arise. All specifications are subject to change without notice. 400856-005 01/07

